

Floral motif

Motif No.1

Motif No. 2



Motif No. 3



*Moser*

Perfectly clear, thin-walled and flared bowl extends harmoniously over the elegant plain stem. Its extremely refined silhouette makes Charm surprisingly attractive for everyone. The Charm glasses can be decorated with engraved floral motif or with three engraved adorable subtle motifs: Tulip (1), Breeze (2) and Rosette (3). Designed by Trude Petri in 1944.



	1/x	1	2	3	11/x	10/1/2/1	19	18/1
Capacity: ml/oz	290/9.7	230/7.7	180/6	130/4.3	170/5.7	600/20	1000/1 qt.	280/9.3
Height: cm/inch	21,9/8.6	20,2/7.9	18,7/7.3	17,1/6.7	25,2/9.9	29,8/11.7	26,3/10.3	13,4/5.3



8/1/x Floral motif  
C: 290 ml / 9.7 oz  
H: 21,9 cm / 8.6 inch

8/10/1/2/1  
C: 600 ml / 20 oz  
H: 29,8 cm / 11.7 inch

8/11/f/x Motif No. 2  
C: 170 ml / 5.7 oz  
H: 25,2 cm / 9.9 inch

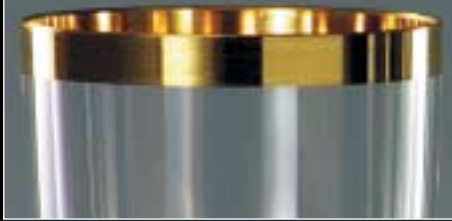
*Moser*

8/1 Motif No. 1  
C: 230 ml / 7.7 oz  
H: 20,2 cm / 7.9 inch

8/18/1  
C: 280 ml / 9.3 oz  
H: 13,4 cm / 5.3 inch

The Charm pattern is available in a collection of over fifteen pieces to complement your dining table, buffet, bar and dressing table. Included are stemware and barware.

1020/POS



1020/PO



President 1020



*Moser*

Simple beauty of the barrel-shaped bowl with the elegant shaped, six-sided stem and foot graces the grandeur to the President drinking set, especially with decoration of gold rim or broad gold border. These attributes has made President the choice of numerous governments at official state occasions. Design circa 1895.



	1	1/1/2	2	3	11/f	10/1	19	18/1
Capacity: ml/oz	400/13.3	320/10.7	200/6.7	150/5	180/6	1000/1 qt.	1000/1 qt.	330/11
Height: cm/inch	19/7.5	17,8/7	16,6/6.5	15,3/6	19,7/7.7	29,9/11.7	29,2/11.5	12,1/4.8





1021/1/2/POS  
C: 320 ml / 10.7 oz  
H: 17,8 cm / 7 inch

1030/1  
C: 1000 ml / 1 qt.  
H: 29,9 cm / 11.7 inch

1039  
C: 1000 ml / 1 qt.  
H: 29,2 cm / 11.5 inch

1038/1  
C: 330 ml / 11 oz  
H: 12,1 cm / 4.8 inch

1023  
C: 150 ml / 5 oz  
H: 15,3 cm / 6 inch

*Moser*

The President pattern is available in a collection of over fifteen pieces to complement your dining table, buffet, bar and dressing table. Included are stemware, barware, small plate and bowl.

Floral motif



*Moser*

The flute-shaped goblet is delicately engraved with a symphony of cascading flora. The cut stem is pearled and gilded on its edges. A golden rim completes this masterpiece of the glassmaker's art. Design circa 1895.



	1	2	3	9	11/xx/f	10/I	19	18/I
Capacity: ml/oz	220/7.3	190/6.3	140/4.7	150/5	160/5.3	1000/1 qt.	1500/1.5 qt.	400/13.3
Height: cm/inch	10,1/4	19,1/7.5	17,9/7	14,3/5.6	21,8/8.6	25,4/10	30,2/11.9	14,2/5.6





4413/PO engr.  
W: 15,5 cm / 6.1 inch



4669/II/4400/PO engr.  
C: 320 ml / 10.7 oz  
H: 12 cm / 4.7 inch



4408/X/PO engr.  
C: 265 ml / 8.8 oz  
H: 8,9 cm / 3.5 inch



4412/PO engr.  
H: 6,1 cm / 2.4 inch  
W: 12,5 cm / 4.9 inch



4414/IV/PO engr.  
W: 14 cm / 5.5 inch

*Moser*

The Maharani pattern is available in a collection of over forty pieces to complement your dining table, buffet, bar and dressing table. Included are stemware, barware and serveware, platters, plates and bowls, table accessories and more.

The glasses are available in clear and six Moser's translucent colours: Aquamarine, Eldor, Beryl, Topaz, Rosalin and Alexandrite (from left).



4404/PO engr. set 6 col./aqua

4669/OP



*Moser*

The warmth and glow of fine liquors spread through Moser snifters. Enhance the pleasure derived from these superb vessels with a 24 carat gold rim or with hand-engraved hunting scenes.



	00	0	I	1/2/1	II	III	IV	V
Capacity: ml/oz	1200/40	860/28.6	590/19.6	410/13.7	320/10.7	200/6.7	130/4.3	100/3.3
Height: cm/inch	18,2/7.1	16,3/6.4	14,7/5.8	13,6/5.3	12/4.7	10,8/4.2	9,8/3.8	8,9/3.5

4669/II/RH  
C: 320 ml / 10.7 oz  
H: 12 cm / 4.7 inch



Partridge

Grouse

Corncrake



*Moser*

Pheasant

Grey goose

Duck

The brandy and cognac glasses are decorated with engraved birds (RH). Available in clear and six Moser's translucent colours: Partridge (Eldor), Grouse (Aquamarine), Corncrake (Topaz), Pheasant (Rosalin), Grey goose (Alexandrite) and Duck (Beryl).





*Moser*

A masterwork of soaring beauty. Stunning copper wheel engraved roses are crowned by an engraved and gilded vine that is echoed on the gold rimmed base. A majestically tall, faceted and shaped stem accentuates the grandeur of Paula. Design 1902.



	1	2	3	9	11/f	10/l	19	18/l
Capacity: ml/oz	270/9	180/6	130/4.3	140/4.7	140/4.7	1000/1 qt.	1500/1.5 qt.	370/12.3
Height: cm/inch	10,1/4	23,7/9.3	21,1/8.3	17,3/6.8	27,2/10.7	42,5/16.7	24,2/9.5	13,3/5.2



626/7000/PO engr.  
H: 35 cm / 13.7 inch



7013/PO engr.  
W: 30 cm / 11.8 inch



2496/7000/PO engr.  
C: 1000 ml / 1 qt.  
H: 18,8 cm / 7.4 inch



5299/7000/PO engr.  
C: 1500 ml / 1.5 qt.  
H: 28,3 cm / 11.1 inch



2416/7000/PO engr.  
C: 500 ml / 16.7 oz  
H: 14,8 cm / 5.8 inch

*Moser*

The Paula pattern is available in a collection of over fifty pieces to complement your dining table, buffet, bar and dressing table. Included are stemware, barware and serveware, platters, plates and bowls, candlesticks, table accessories, perfume set and more. The glasses are available in clear and six Moser's translucent colours: Beryl, Topaz, Eldor, Rosalin, Alexandrite and Aquamarine (from left).

7011/f/PO engr. set 6 col./aqua





Motif No. 4

Motif No. 5



*Moser*

The classic, balloon-shaped bowl - perfectly clear on top, diamond cut on bottom - is perched on a faceted stem. Peer into the bowl and see the elegant hand cut panels below. Royal appears with or without a golden rim and with engraved motifs: Leaf (4) and Festival (5). The set was given its name after the coronation of King Edward VII and his wife, Queen Alexandra. Royal is fit for a monarch.

Design 1907.



	1	2	3	9	11/f	10/I	19	18/I
Capacity: ml/oz	210/7	120/4	90/3	180/6	180/6	1000/1 qt.	1500/1.5 qt.	300/10
Height: cm/inch	18/7.1	13,9/5.5	12,6/4.9	12,3/4.8	21/8.2	25,3/9.9	26,2/10.3	13,4/5.3



9013/1/PO  
W: 31,5 cm / 12,4 inch



4669/II/9000/PO  
C: 320 ml / 10,7 oz  
H: 12 cm / 4,7 inch



9014/IV/PO  
W: 12,5 cm / 4,9 inch

9012/PO  
H: 5 cm / 2 inch  
W: 12 cm / 4,7 inch



9013/PO  
W: 15 cm / 5,9 inch

*Moser*

The Royal pattern is available in a collection of over forty pieces to complement your dining table, buffet, bar and dressing table. Included are stemware, barware and serveware, platters, plates and bowls, table accessories and more.

9900/OP



9900/PO



9900/OP platinum



Copenhagen 9900/OP

Classical, drop-shaped goblets blend harmoniously with faceted stems. The richly etched and gilded border combined with an elegant golden rim has made Copenhagen the choice of numerous governments and royal courts at official state occasions. Design 1909.



	1	2	3	9	11/xx/f	10/1	19	18/1	8/0
Capacity: ml/oz	260/8.7	180/6	110/3.7	150/5	170/5.7	1000/1 qt.	1500/1.5 qt.	300/10	370/12.3
Height: cm/inch	10,1/4	16,2/6.4	14,1/5.5	11,4/4.5	21/8.2	31,6/12.4	30/11.8	13/5.1	10/3.9



9914/N/OP  
H: 15,6 cm / 6.1 inch  
W: 23,5 cm / 9.2 inch



9900/P/OP  
H: 6,4 cm / 2.5 inch  
W: 12,5 cm / 4.9 inch



9913/N/PO  
H: 15 cm / 5.9 inch  
W: 25,5 cm / 10 inch



9913/T/PO  
W: 23 cm / 9 inch



9913/OP  
W: 36 cm / 14.1 inch

*Moser*

The Copenhagen pattern is available in a collection of over forty pieces to complement your dining table and bar. Included are stemware, barware, platters, plates and bowls, candlesticks, table accessories and more.



10160/OP



10160/OP platinum



10160/POS platinum



Splendid 10160/OP



*Moser*

Splendid beyond its name, the "chef d'oeuvre" of the Moser collections. A masterpiece of design and craftsmanship. The surface decoration, a sparkling cross-cut filigree, is complemented by a wide, distinctively etched and gilded border. Splendid has been commissioned by maharajas, kings, presidents, governments and diplomatic missions. Design 1911.



	1	2	3	9	11/xx/f	10/I	19	18/I
Capacity: ml/oz	260/8.7	200/6.7	120/4	150/5	140/4.7	1000/1 qt.	1500/1.5 qt.	180/6
Height: cm/inch	23,6/9.3	10,6/4.2	17,2/6.8	14,6/5.7	20,6/8.1	29,8/11.7	26,2/10.3	13,5/5.3

10173/I/OP  
W: 31,5 cm / 12.4 inch



579/10160/OP  
H: 30 cm / 11.8 inch



1019/10160/OP  
H: 23 cm / 9 inch



910/10160/OP  
H: 20,8 cm / 8.2 inch  
W: 36 cm / 14.1 inch



10175/I/OP  
H: 10 cm / 3.9 inch  
W: 24 cm / 9.4 inch



2650/II/10160/OP  
H: 9,6 cm / 3.8 inch  
W: 24 cm / 9.4 inch

*Moser*

The Splendid pattern is available in a collection of over one hundred pieces to complement your dining table, buffet, bar and dressing table. Included are stemware, barware and serveware, platters, plates and bowls, candlesticks, table accessories, perfume set and more.



10260/OP



10260/PO



Cromwell 10260

A harmoniously proportioned and gracefully shaped panel cut table set in the Chippendale style. Six-sided cut stem, facets evenly continue onto the lower part of the bowl and end in arches. Design 1911.

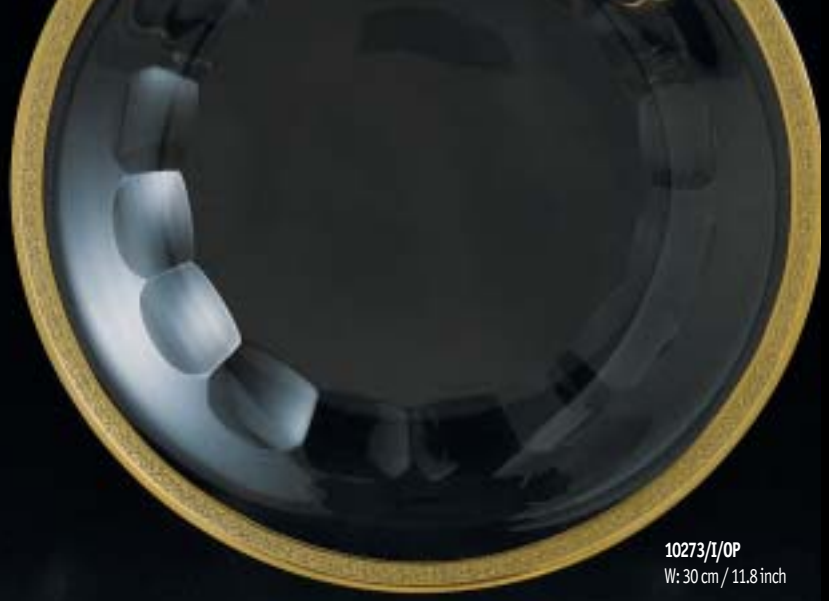


	1	2	3	9	11/xx/f	10/I	19	18/I
Capacity: ml/oz	260/8.7	190/6.3	140/4.7	170/5.7	150/5	750/25	1500/1.5 qt.	300/10
Height: cm/inch	19/7.5	17/6.7	15.2/6	13.9/5.5	20.8/8.2	30.3/11.9	23.1/9.1	13.2/5.2





10260/S/OP  
H: 20,5 cm / 8.1 inch



10273/I/OP  
W: 30 cm / 11.8 inch



10275/I/OP  
H: 10 cm / 3.9 inch  
W: 25 cm / 9.8 inch

10272/OP  
H: 6,1 cm / 2.4 inch  
W: 13 cm / 5.1 inch



10273/OP  
W: 16 cm / 6.3 inch



10260/D/OP  
H: 12 cm / 4.7 inch

10260/W/OP  
C: 200 ml / 6.7 oz  
H: 12,4 cm / 4.9 inch



*Moser*

The Cromwell pattern is available in a collection of over forty pieces to complement your dining table, buffet, bar and dressing table. Included are stemware, barware and serveware, platters, plates and bowls, candlesticks, table accessories, perfume set and more.

Motif Maria Theresia



Motif Watteau



*Moser*

The art and skill of Bohemian glassmakers, cutters and engravers have converged to create this Baroque masterpiece. The barrel-shaped bowl is paneled, fluted and copper wheel engraved with scenes from the paintings of Watteau or baroque motif. A faceted sphere caps the richly cut and shaped stem and base. Design 1913.



	1	2	3	9	11/x/f	10/1	19	18/1
Capacity: ml/oz	290/9.7	210/7	140/4.7	170/5.7	140/4.7	1000/1 qt.	1500/1.5 qt.	320/10.7
Height: cm/inch	17,5/6.9	15,6/6.1	13,8/5.4	11,8/4.6	20,3/8	31/12.2	20,9/8.2	12,1/4.8





10629 Watteau  
C: 170 ml / 5.7 oz  
H: 11,8 cm / 4.6 inch

10638/I Watteau  
C: 320 ml / 10.7 oz  
H: 12,1 cm / 4.8 inch

10636 Watteau  
C: 320 ml / 10.7 oz  
H: 16,1 cm / 6.3 inch

10634/I Watteau  
H: 4,1 cm / 1.6 inch  
W: 22,5 cm / 8.8 inch

*Moser*

The Maria Theresia pattern is available in a collection of over thirty pieces to complement your dining table, buffet, bar and dressing table. Included are stemware, barware and serveware, platters, plates and bowls, table accessories and more.



11520/OP



11520/OP platinum



11520/PO



*Moser*

Designated in honour of Pope Pius XI in 1923, Pope is one of the patterns for which Moser is world renowned. The bell-shaped goblet is cut with arched panels that lead to a faceted stem and hexagonally cut base. Pope has been commissioned by governments and diplomatic missions. Design 1916.



	1	2	3	9	11/xx/f	10/1	19	18/1
Capacity: ml/oz	170/5.7	100/3.3	70/2.3	120/4	150/5	1000/1 qt.	1500/1.5 qt.	320/10.7
Height: cm/inch	18,9/7.4	16,3/6.4	14,4/5.7	13/5.1	20,6/8.1	27,8/10.9	26,2/10.3	13/5.1



**11520/S**  
H: 21 cm / 8.2 inch

**11520/E**  
H: 15,5 cm / 6.1 inch  
W: 14,1 cm / 5.5 inch

**4669/II/11520**  
C: 320 ml / 10.7 oz  
H: 12,2 cm / 4.8 inch

**11528/0**  
C: 370 ml / 12.3 oz  
H: 10,5 cm / 4.1 inch

*Moser*

The Pope pattern is available in a collection of over fifty pieces to complement your dining table, buffet, bar and dressing table. Included are stemware, barware and serveware, platters, plates and bowls, candlesticks, table accessories, perfume set and more.

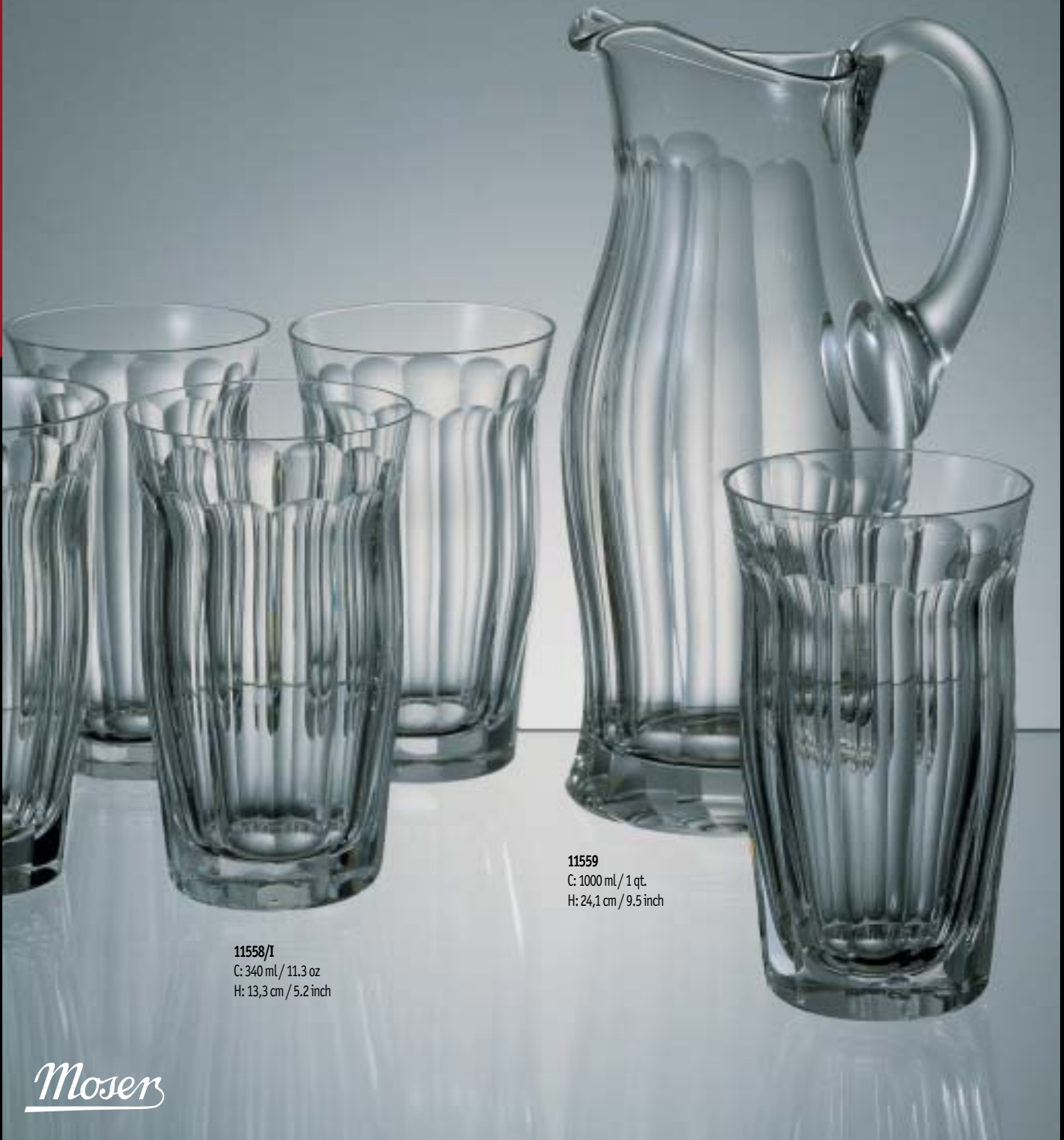


Delicate, arched panels slope gracefully upward from a faceted stem. Created in honour of the beautiful Bavarian spa town of Heilbrunn, a town closely allied to Karlovy Vary - the home of Moser - in spirit and friendship. Design 1916.



	1	2	3	9	11/f	10/l	19	18/l
Capacity: ml/oz	250/8.3	170/5.7	110/3.7	160/5.3	120/4	800/26.6	1000/1 qt.	340/11.3
Height: cm/inch	20,3/8	18/7.1	15,8/6.2	14,6/5.7	19,3/7.6	30,4/11.9	24,1/9.5	13,3/5.2





**11558/I**  
C: 340 ml / 11.3 oz  
H: 13,3 cm / 5.2 inch

**11559**  
C: 1000 ml / 1 qt.  
H: 24,1 cm / 9.5 inch

*Moser*

The Heilbrunn pattern is available in a collection of over fifteen pieces to complement your dining table, buffet, bar and dressing table. Included are stemware, barware and serveware.

12940/OP



12940/PO



*Moser*

Flowing and perfectly proportioned, light radiates from every facet of this most popular variation of the Papal design. This table suite is softly shaped and paneled by skillful Moser glassmakers. Adele Melikoff has been commissioned by maharajas, kings, presidents, governments and diplomatic missions. Design circa 1922-1923.



	1	2	3	9	11/box/f	10/1	19	18/1
Capacity: ml/oz	200/6.7	150/5	100/3.3	130/4.3	150/5	850/28.3	1500/1.5 qt.	260/8.7
Height: cm/inch	18,9/7.4	16,9/6.6	15,1/5.9	14,2/5.6	21,6/8.5	29,8/11.7	26,2/10.3	13,2/5.2



12954/N  
H: 18,4 cm / 7.2 inch  
W: 24 cm / 9.4 inch

12953/I  
W: 30 cm / 11.8 inch



12957  
C: 340 ml / 11.3 oz  
H: 11,2 cm / 4.4 inch



12954/IV  
H: 3,6 cm / 1.4 inch  
W: 12,5 cm / 4.9 inch



12953  
W: 16 cm / 6.3 inch

*Moser*

The Adele Melikoff pattern is available in a collection of over fifty pieces to complement your dining table, buffet, bar and dressing table. Included are stemware, barware and serveware, platters, plates and bowls, table accessories and more.



13880/OP



13880/PO



Marienbad 13880

Design circa 1927, at the height of the stylish Art Deco era. Graceful and flowing, Marienbad is sculpted from a single strand of glass and panel cut into six sides by hand.



	1	2	3	9	11/f	10/I	19	18/I
Capacity: ml/oz	230/7.7	160/5.3	115/3.8	120/4	110/3.7	730/24.3	1500/1.5 qt.	300/10
Height: cm/inch	22/8.6	18,6/7.3	16,6/6.5	13,9/5.5	20,5/8.1	30,3/11.9	23,3/9.1	13,2/5.2



13893/I  
W: 30 cm / 11.8 inch



13895/I  
H: 10 cm / 3.9 inch  
W: 25 cm / 9.8 inch



13892  
H: 6,1 cm / 2.4 inch  
W: 13 cm / 5.1 inch



13894/IV  
H: 3,6 cm / 1.4 inch  
W: 12,5 cm / 4.9 inch



The Marienbad pattern is available in a collection of over thirty pieces to complement your dining table, buffet, bar and dressing table. Included are stemware, barware and serveware, platters, plates and bowls, table accessories and more.



Stylish and opulent, Moser wine hocks indulge the spirit with transparent overlay colours and hand cut craftsmanship. Marienbad is available in sets of six assorted colours: Amethyst, Rose, Blue, Aurora, Reseda and Green (from left).





13887/RH set 6 col. overlay

C: 140 ml / 4.7 oz

H: 19.8 cm / 7.8 inch



Marienbad hocks are also decorated with engraved birds (RH). Available in six Moser's assorted overlay colours: Grey goose (Aurora), Grouse (Blue), Pheasant (Amethyst), Partridges (Rose), Corncrake (Reseda) and Duck (Green) - from left.

*Moser*

14000/RH



*Moser*

The set bears the first name of Leo Moser's son. The combination of simple and profiled form with faceted cut reflects the functionalist character of applied arts. Available also with the engraved motifs of birds (RH): Grey goose, Grouse, Pheasant, Corncrakes, Ducks and Partridges. Designed by Leo Moser in 1929.



	1	2	3	9	11/f	10/I	19	18/I
Capacity: ml/oz	270/9	180/6	120/4	160/5.3	120/4	1000/1 qt.	1500/1.5 qt.	290/9.7
Height: cm/inch	19,7/7.7	17,8/7	15,8/6.2	16,2/6.4	21/8.2	33,9/13.3	19,9/7.8	14/5.5



14010/I/RH  
C: 1000 ml / 1 qt.  
H: 33,9 cm / 13.3 inch

14001/RH  
C: 270 ml / 9 oz  
H: 19,7 cm / 7.7 inch

14002/RH  
C: 180 ml / 6 oz  
H: 17,8 cm / 7 inch

14000/N  
H: 15,5 cm / 6.1 inch  
W: 23 cm / 9 inch

14013/I  
W: 30,5 cm / 12 inch

*Moser*

The Thomas pattern is available in a collection of over twenty pieces to complement your dining table, buffet, bar and dressing table. Included are stemware, barware and serverware, platters, plates and bowls.



15000/OP



15000/OP platinum



15000/PO



15000/2x PO



Lady Hamilton 15000



*Moser*

A full bowl with hand cut, teardrop panels curves gently down to the flared and skirted stem. Graceful and poised, Lady Hamilton is one of Moser's most noble creations. This table suite has been commissioned by maharajas, kings, presidents, governments and diplomatic missions. Design 1934.



	1	2	3	9	11/xx/f	18/1	10/1	19
Capacity: ml/oz	210/7	140/4.7	100/3.3	100/3.3	140/4.7	360/12	920/30.6	1500/1.5 qt.
Height: cm/inch	16.4/6.4	10.7/4.2	14.1/5.5	13/5.1	19.7/7.7	13.9/5.5	28.2/11.1	20.2/7.9

15013/I  
W: 30 cm / 11.8 inch



15015/0/N  
H: 21,5 cm / 8.4 inch  
W: 34,5 cm / 13.5 inch



15014/I  
H: 6,6 cm / 2.6 inch  
W: 24,5 cm / 9.6 inch



15000/S  
H: 21 cm / 8.2 inch



15013/N  
H: 15 cm / 5.9 inch  
W: 25,5 cm / 10 inch



15013  
W: 20,5 cm / 8.1 inch

*Moser*

The Lady Hamilton pattern is available in a collection of over seventy pieces to complement your dining table, buffet, bar and dressing table. Included are stemware, barware and serveware, platters, plates and bowls, candlesticks, table accessories, perfume set and more.



15000/OP overlay



*Moser*

Lady Hamilton 15000 overlay

A colourful, festive accent to any table that is set with any pattern of Moser stemware. The Lady Hamilton set of six multicoloured glasses will create a festive, yet elegant, mood for your dinner party. The set is available in various sizes: Water Goblets, Red Wines, White Wines, Liquor Glasses, Hocks and Champagne Flutes. Each size is in six overlay colours: Green, Reseda, Aurora, Rose, Amethyst and Blue (from left).



	1	1	2	3	5	7	11/f
Capacity: ml/oz	310/10.3	210/7	140/4.7	100/3.3	40/1.3	130/4.3	100/3.3
Height: cm/inch	19,1/7.5	17,6/6.9	15,7/6.2	14,1/5.5	10,4/4.1	18,3/7.2	20/7.9





15007/RH set 6 col. overlay

C: 130 ml / 4.3 oz

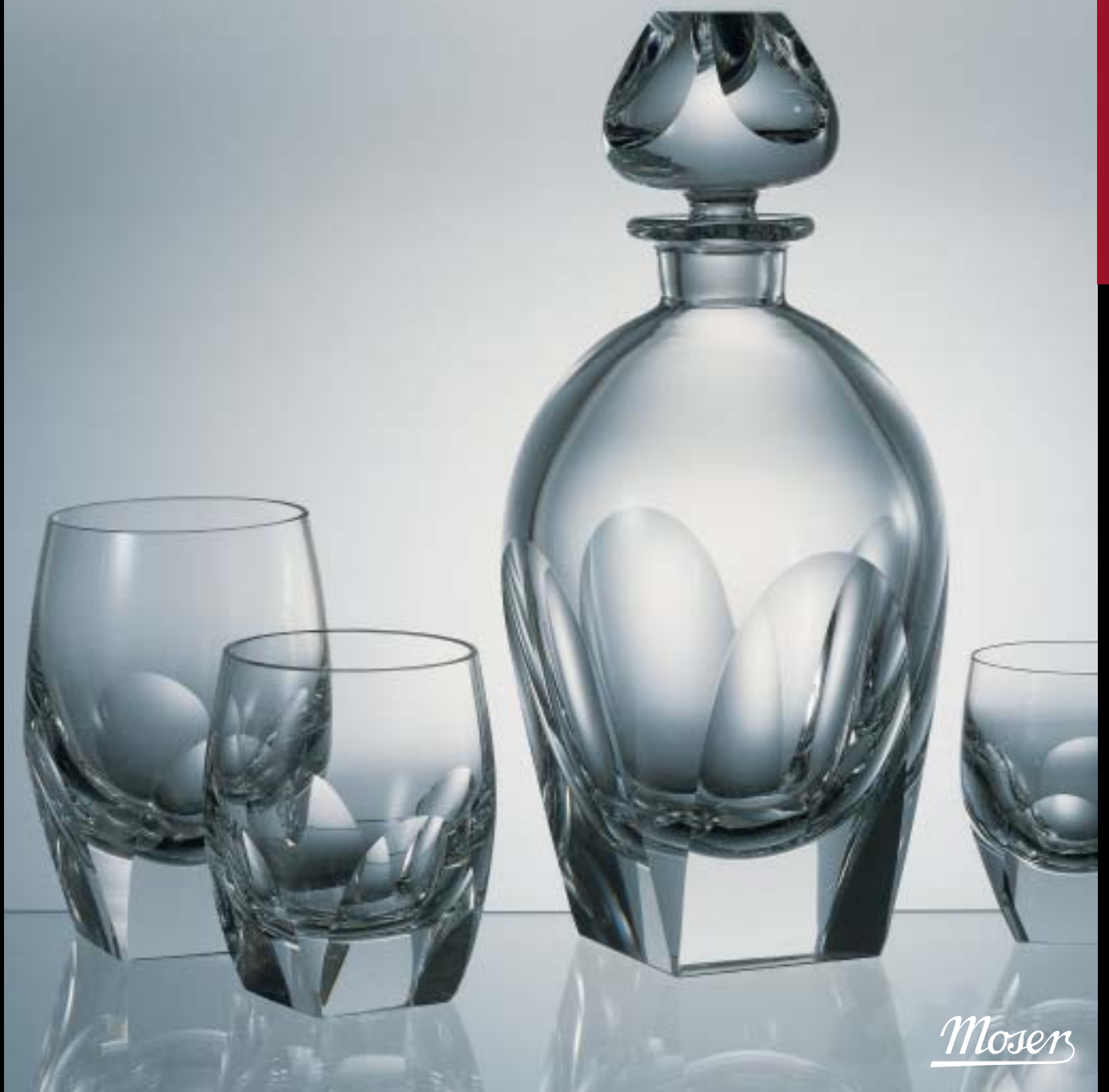
H: 18,3 cm / 7.2 inch



Stylish and opulent, Moser wine hocks indulge the spirit with transparent overlay colours and hand cut craftsmanship. Lady Hamilton hocks are also decorated with engraved birds (RH). Available in six Moser's assorted overlay colours: Partridges (Rose), Corncrake (Reseda), Duck (Green), Grouse (Blue), Grey goose (Aurora) and Pheasant (Amethyst) - from left.

*Moser*

16020/0P



Bar 16020

Bold and distinctive, Moser barware is radiant in translucent colours or brilliantly clear glass. "Ice bottom", the name given to the square cut base, describes its rich proportions. Design 1934.



	1	2	3	4	9	10/1	19	18/1
Capacity: ml/oz	220/7.3	170/5.7	100/3.3	70/2.3	250/8.3	750/25	1500/1.5 qt.	330/11
Height: cm/inch	4,5/1.8	9,5/3.7	8,2/3.2	7,1/2.8	6,8/2.7	20,7/8.1	20,2/7.9	12,5/4.9

**16032**  
H: 7,5 cm / 2.9 inch  
W: 12 cm / 4.7 inch



**16033**  
W: 19 cm / 7.5 inch



**16038/I**  
C: 330 ml / 11 oz  
H: 12,5 cm / 4.9 inch

**16030/I**  
C: 750 ml / 25 oz  
H: 20,7 cm / 8.1 inch

**16021**  
C: 220 ml / 7.3 oz  
H: 4,5 cm / 1.8 inch

*Moser*

The Bar pattern is available in a collection of over thirty pieces to complement your dining table, buffet, bar and dressing table. Included are barware and serveware, platters, plates and bowls, table accessories, perfume set and more. The glasses are available in clear and six Moser's translucent colours: Eldor, Beryl, Aquamarine, Rosalin, Alexandrite and Topaz (below from left).

**16031/f set 6 col./aqua**  
C: 220 ml / 7.3 oz  
H: 15 cm / 5.9 inch





16520/OP 15000

16520/OP 9900



Culbuto 16520

The curvaceous Culbuto bar set nestles firmly in your hand, holding its contents securely and with style. The table suite is available in clear or translucent colours with etched gold border or engraved birds (RH). Round form of Culbuto drinking set represents the style of Functionalism at its best.

Design 1935.



Capacity: ml/oz  
Height: cm/inch

1  
340/11.3  
9/3.5

2  
240/8  
8/3.1

3  
170/5.7  
7,2/2.8

4  
100/3.3  
6,4/2.5

5  
65/2.2  
5,4/2.1

6  
30/1  
4,5/1.8

10/II  
500/16.7  
13,4/5.3

19  
1500/1.5 qt.  
19,8/7.8

18/I  
330/11  
13,1/5.1



16538/1/RH  
C: 330 ml / 11 oz  
H: 13,1 cm / 5.1 inch



16521/RH  
C: 340 ml / 11.3 oz  
H: 9 cm / 3.5 inch



16530/1/RH  
C: 1000 ml / 1 qt.  
H: 17,1 cm / 6.7 inch

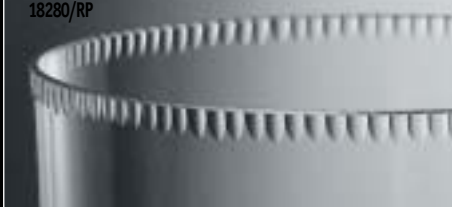
*Moser*

The Culbuto pattern is available in a collection of over twenty pieces to complement your dining table, buffet, bar and dressing table. Culbuto can be rendered in any of Moser's colours, plain or with engraved birds: Grey goose (Alexandrite), Pheasant (Rosalin), Grouse (Aquamarine), Corncrake (Topaz), Duck (Beryl) and Partridge (Eldor) - below from left.

16526/RH set 6 col./aqua  
C: 30 ml / 1 oz  
H: 4,5 cm / 1.8 inch



18280/RP



18280/PO



*Moser*

Mozart embodies the refinements of the style Rococo with its delicate bowl, pearl engraved rim and beautifully shaped and faceted stem. Design circa 1936.



	1	2	3	9	11/f	10/I	19	18/I
Capacity: ml/oz	250/8.3	170/5.7	120/4	160/5.3	180/6	1000/1 qt.	1500/1.5 qt.	400/13.3
Height: cm/inch	10,4/4.1	17,7/7	15,9/6.2	11,8/4.6	22,5/8.8	28,6/11.2	21,8/8.6	14,2/5.6





18280/E/RP  
H: 17 cm / 6.7 inch  
W: 15,5 cm / 6.1 inch



18293/I/RP  
W: 30 cm / 11.8 inch



18295/II/RP  
H: 9,6 cm / 3.8 inch  
W: 21,5 cm / 8.4 inch



4669/II/18280/RP  
C: 320 ml / 10.7 oz  
H: 12,9 cm / 5.1 inch



18280/K/RP  
C: 290 ml / 9.7 oz  
H: 8,8 cm / 3.5 inch



18295/I/RP  
H: 11,1 cm / 4.4 inch  
W: 26,5 cm / 10.4 inch

*Moser*

The Mozart pattern is available in a collection of over forty pieces to complement your dining table, buffet, bar and dressing table. Included are stemware, barware and serveware, platters, plates and bowls, candlesticks, table accessories and more.

25400/0P



25400/P0



25400/0P platinum



Diplomat 25400



*Moser*

Light bounces off the bell-shaped bowl and faceted stem of this brilliantly cut Papal style table set. Design circa 1940.



	1	2	3	9	11/xx/f	10/I	19	18/I
Capacity: ml/oz	150/5	110/3.7	70/2.3	130/4.3	170/5.7	1000/1 qt.	1500/1.5 qt.	210/7
Height: cm/inch	18,9/7.4	16,9/6.6	15/5.9	13,3/5.2	21,4/8.4	28,6/11.2	28,7/11.3	13,9/5.5

25412  
H: 6,3 cm / 2.5 inch  
W: 14 cm / 5.5 inch



25413  
W: 17 cm / 6.7 inch



25415/I  
H: 9,2 cm / 3.6 inch  
W: 24 cm / 9.4 inch



25414/IV  
H: 3,8 cm / 1.5 inch  
W: 14 cm / 5.5 inch



25408  
C: 140 ml / 4.7 oz  
H: 10,6 cm / 4.2 inch



25400/K  
C: 400 ml / 13.3 oz  
H: 13,8 cm / 5.4 inch

*Moser*

The Diplomat pattern is available in a collection of over thirty pieces to complement your dining table, buffet, bar and dressing table. Included are stemware, barware and serveware, platters, plates and bowls, table accessories and more.





*Moser*

- 0 SLIM LADY
- 1 LONG FELLOW
- 2 LONG FACE
- 3 MOON FACE
- 4 STOUT GENTLEMAN
- 5 BIG BERTHA



	0	1	2	3	4	5
<b>Capacity:</b> ml/oz	440/14.7	1000/1 qt.	1850/1 qt. 28 oz	2700/2 qt. 23 oz	3200/3 qt. 6 oz	4700/4 qt. 23 oz
<b>Height:</b> cm/inch	46/18.1	42,8/16.8	39,3/15.4	32,5/12.8	27,1/10.6	23,6/9.3



26120-5 set clear LB



26120-5 set 6 col./aqua LB

Medium Snifters 26100-5



**26101**  
C: 230 ml / 7.7 oz  
H: 24,7 cm / 9.7 inch

**26104**  
C: 550 ml / 18.3 oz  
H: 16,2 cm / 6.4 inch

**26102**  
C: 350 ml / 11.7 oz  
H: 22,4 cm / 8.8 inch

**26100**  
C: 140 ml / 4.7 oz  
H: 26,7 cm / 10.5 inch

**26105**  
C: 770 ml / 25.6 oz  
H: 13,2 cm / 5.2 inch

**26103**  
C: 440 ml / 14.7 oz  
H: 19,2 cm / 7.5 inch

*Moser*

These humorous, oversized "bubbles of glass" were created for your pure enjoyment. Each goblet is designed to produce its own distinctive sound. Raise your glass in a toast and hear a charming melody resembling bell chimes. Giant Snifters, designed by F. Chocholatý in 1958, were awarded the Grand Prix at the World Expo 58 Exhibition in Brussels. Chocholatý classified humanity into six different types and created six snifters differing in shape, height and volume. He gave each snifter individual names with reference to facial qualities.

Miniature Snifters 26120-5



**26121**  
C: 30 ml / 1 oz  
H: 13,1 cm / 5.1 inch

**26122**  
C: 35 ml / 1.2 oz  
H: 11 cm / 4.3 inch

**26123**  
C: 55 ml / 1.8 oz  
H: 9,3 cm / 3.7 inch

**26124**  
C: 55 ml / 1.8 oz  
H: 7,7 cm / 3 inch

**26125**  
C: 75 ml / 2.5 oz  
H: 6,6 cm / 2.6 inch

**26120**  
C: 25 ml / 0.8 oz  
H: 14,5 cm / 5.7 inch

26620/OP



26620/PO



*Moser*

A whisky set with perfect manners is available in sparkling clear or six assorted translucent colours, with golden rim, etched gold border or six different hand engraved birds. Designed by Oldřich Lípa in 1968.



	2	3	4	7	8	18/1	10/1	19	
Capacity:	ml/oz	330/11	210/7	220/7.3	60/2	150/5	370/12.3	1000/1 qt.	1500/1.5 qt.
Height:	cm/inch	15,5/6.1	14/5.5	11,4/4.5	6,7/2.6	12,9/5.1	10,1/4	25,8/10.1	29,7/11.7





**26620/E/RH**  
H: 12,9 cm / 5.1 inch  
W: 13 cm / 5.1 inch



**26638/L/RH**  
C: 370 ml / 12.3 oz  
H: 10,1 cm / 4 inch



**26630/RH**  
C: 1000 ml / 1 qt.  
H: 25,8 cm / 10.1 inch



**26621/RH**  
C: 400 ml / 13.3 oz  
H: 16,8 cm / 6.6 inch

*Moser*

**26624/RH set clear**  
C: 220 ml / 7.3 oz  
H: 11,4 cm / 4.5 inch



**26621/RH set 6 col./aqua**  
C: 400 ml / 13.3 oz  
H: 16,8 cm / 6.6 inch



**26638/L Endangered Species set clear**  
C: 370 ml / 12.3 oz  
H: 10,1 cm / 4 inch



**26638/L Endangered Species set 6 col./aqua**  
C: 370 ml / 12.3 oz  
H: 10,1 cm / 4 inch



**26627 set 6 col./aqua**  
C: 60 ml / 2 oz  
H: 6,7 cm / 2.6 inch



**26620/1 Pebbles**



Whisky set is available in a collection of over fifteen pieces to complement your dining table, buffet, bar and dressing table. Whisky set can be rendered in any of Moser's colours, plain, cut pebbles or with engraved birds (RH): Grey goose (Alexandrite), Partridge (Eldor), Duck (Beryl), Pheasant (Rosalin), Corncrake (Topaz) and Grouse (Aquamarine) - from left. Moser's master engravers capture the poetry of motion embodied in the elegant representations of Endangered Species. Elephant (Aquamarine), Leopard (Beryl), Giraffe (Eldor), Monkey (Topaz), Zebra (Alexandrite) and Antelope (Rosalin) inhabit their world in lifelike, hand engraved artworks (from left).

27680/0P



27680/0P platinum



Designed by Vladimír Jelínek in 1982 to commemorate the 125<sup>th</sup> anniversary of the Moser Glassworks, Jubilee features a traditional Moser styling technique: the Papal Cut. Base, stem and bowl are cut into six facets.

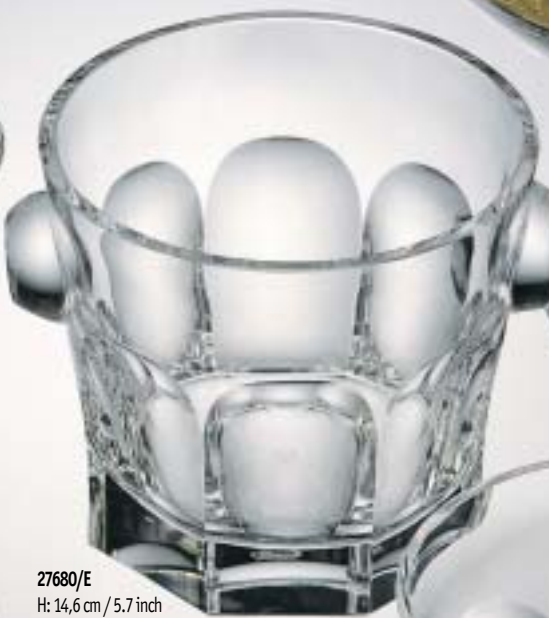


	1	2	3	9	11/xx/f	10/1	19	18/1	8/0
Capacity: ml/oz	240/8	170/5.7	190/6.3	200/6.7	160/5.3	1000/1 qt.	1500/1.5 qt.	320/10.7	360/12
Height: cm/inch	23,1/9.1	21,1/8.3	20,2/7.9	18/7.1	26,7/10.5	34,7/13.6	32,4/12.7	17/6.7	11/4.3

27695/N/I/OP  
H: 18,9 cm / 7.4 inch  
W: 30 cm / 11.8 inch



27695/O/N  
H: 18,6 cm / 7.3 inch  
W: 38 cm / 14.9 inch



27680/E  
H: 14,6 cm / 5.7 inch  
W: 15,9 cm / 6.2 inch

27680/SV  
H: 19 cm / 7.5 inch



27695/N  
H: 9,3 cm / 3.7 inch  
W: 15 cm / 5.9 inch



27693/OP  
W: 16 cm / 6.3 inch

*Moser*

The Jubilee pattern is available in a collection of over fifty pieces to complement your dining table and bar. Included are stemware, barware, platters, plates and bowls, candlesticks, table accessories and more.





*Moser*

The graceful, hand-cut stem creates a striking contrast to the perfectly clear and flared bowl. Imperial in stature, as elegant as a princess, Ophelia was designed by Luboš Metelák in honour of Moser's 125<sup>th</sup> anniversary. Design 1982.



	1	2	3	9	11/f	10/I	19	18/I
Capacity: ml/oz	260/8.7	180/6	140/4.7	170/5.7	190/6.3	1000/1 qt.	1500/1.5 qt.	320/10.7
Height: cm/inch	22,6/8.9	20,6/8.1	19/7.5	16/6.3	24,3/9.5	37,3/14.6	30,7/12.1	15,5/6.1



*Moser*

27784 set 6 col./aqua  
C: 90 ml / 3 oz  
H: 17,5 cm / 6.9 inch

The Ophelia pattern is available in a collection of over twenty pieces to complement your dining table, buffet, bar and dressing table. Included are stemware and barware. The glasses are available in clear and six Moser's translucent colours: Eldor, Rosalin, Topaz, Aquamarine, Alexandrite and Beryl (from left).

Motif No. 6



Motif No. 7



*Moser*

Simply elegant and classically proportioned, Italia shines on your table in brilliantly clear glass. The beauty of the glass can be emphasized by two engraved motifs Ondina (6) and Flora (7) inspired from the nature and its movement. Design 1998.



	1	2	3	6	11/f	10/I	19
Capacity: ml/oz	270/9	200/6.7	140/4.7	55/1.8	140/4.7	900/30	1500/1.5 qt.
Height: cm/inch	19,7/7.7	18,7/7.3	17,6/6.9	13/5.1	22,7/8.9	26,3/10.3	26,2/10.3





**28041 Topaz**  
 C: 270 ml / 9 oz  
 H: 19,7 cm / 7.7 inch

**28042 Eldor**  
 C: 200 ml / 6.7 oz  
 H: 18,7 cm / 7.3 inch

**28050/I Rosalin**  
 C: 900 ml / 30 oz  
 H: 26,3 cm / 10.3 inch

**28043 Aquamarine**  
 C: 140 ml / 4.7 oz  
 H: 17,6 cm / 6.9 inch

**28051/f Alexandrite**  
 C: 140 ml / 4.7 oz  
 H: 22,7 cm / 8.9 inch

*Moser*

The Italia pattern is available in a collection of ten pieces to complement your dining table, buffet, bar and dressing table. Included are stemware and barware. Italia can be rendered in any of Moser's basic colours: Alexandrite, Aquamarine, Beryl, Eldor, Rosalin and Topaz.

Motif No. 1



Motif No. 2



28660/OP



Lucie 28660



*Moser*

The drinking set Lucie was created by Lucie Rýdlová, a student at the Academy of Applied Arts in Prague, in 1992. A combination of ovoid bowl and slender stem cut into six facets creates a highly modern impression and at the same time natural harmony with the character of classical Moser collections. Available also with two engraved motifs: Tulip (1) and Breeze (2).



	1	2	3	9	11/f	10/1	19	18/1	8
Capacity: ml/oz	210/7	150/5	115/3.8	200/6.7	180/6	1000/1 qt.	1000/1 qt.	350/11.7	290/9.7
Height: cm/inch	21,2/8.3	20/7.9	19,2/7.5	16,4/6.4	26,1/10.2	42,2/16.6	40,1/15.7	15,7/6.2	11,5/4.5



**28663**  
C: 115 ml / 3.8 oz  
H: 19,2 cm / 7.5 inch

*Moser*

**28660/c**  
C: 280 ml / 9.3 oz  
H: 14,9 cm / 5.9 inch

**28679**  
C: 1000 ml / 1 qt.  
H: 40,1 cm / 15.7 inch

**28678/I**  
C: 350 ml / 11.7 oz  
H: 15,7 cm / 6.2 inch

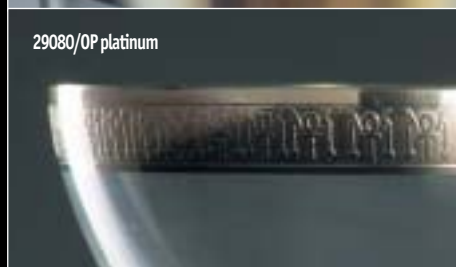
**28676**  
C: 360 ml / 12 oz  
H: 20,5 cm / 8.1 inch

The Lucie pattern is available in a collection of over fifteen pieces to complement your dining table, buffet, bar and dressing table. Included are stemware and barware.



29080/0P

29080/0P platinum



*Moser*

Pharaoh, Maat and Serapis were designed by Ivana Houserová in 1996. She tried to combine a modern design with the timeless philosophy of ancient Egypt. The sets are connected with Egypt not only in names, but also in forms and motifs of pyramid and cone inserted into the stem of the beaker. The sets were awarded Excellent Design of 1996 - prize of the Design Centre in Brno.



	1	2/X	3/X	11/f	19	10/I	18/I	8
Capacity: ml/oz	300/10	200/6.7	260/8.7	190/6.3	1500/1.5 qt.	1000/1 qt.	300/10	360/12
Height: cm/inch	21,3/8.4	21,7/8.5	20,4/8	23,8/9.3	23,2/9.1	26,1/10.2	15/5.9	10,9/4.3



**29122/X**  
C: 200 ml / 6.7 oz  
H: 21,7 cm / 8.5 inch



**29129**  
C: 130 ml / 4.3 oz  
H: 16,2 cm / 6.4 inch



**29130/I**  
C: 1500 ml / 1.5 qt.  
H: 28 cm / 11 inch



**29128**  
C: 360 ml / 12 oz  
H: 10,9 cm / 4.3 inch



29120 cut

*Moser*



**29141**  
C: 300 ml / 10 oz  
H: 21,3 cm / 8.4 inch



**29151/f**  
C: 190 ml / 6.3 oz  
H: 23,8 cm / 9.3 inch



**29142/X**  
C: 200 ml / 6.7 oz  
H: 21,7 cm / 8.5 inch



**29159**  
C: 1500 ml / 1.5 qt.  
H: 23,2 cm / 9.1 inch



29140 cut

The Pharaoh, Serapis and Maat patterns are available in a collection of over fifteen pieces to complement your dining table, buffet, bar and dressing table. Included are stemware and barware.





Fanciful, numerous tumblers that tip and turn, creating a new slant in barware. The playful style of Joker set enables four tilted edges. Designed by Oldřich Lípa in 1997.



	18/I	18/II	18/III	18/IV	18/V	18/VI
Capacity: ml/oz	330/11	240/8	170/5.7	100/3.3	65/2.2	35/1.2
Height: cm/inch	10,7/4.2	9,6/3.8	8,5/3.3	7,4/2.9	6,5/2.6	5,4/2.1





*Moser*

Joker tumblers are available in translucent Moser colours in addition to clear: Alexandrite, Aquamarine, Beryl, Eldor, Rosalin, Topaz, Ocean green, Dark Blue, Dark Violet and Smoke.



Solid and stable, this is the first impression given by the drinking set of Jan Mareš. The glass artist drew inspiration from his stay at the Pilchuck International Glass School in Washington State, U.S.A. Seattle combines clear glass goblets with stems in translucent Moser colours. Stems have the feel of textured bark from trees that have survived centuries in the geologically rich surroundings of Seattle. Designed 2000.



	1	2	3	11/f	10/II	19	18/I	8	
Capacity:	ml/oz	380/12.7	260/8.7	180/6	180/6	680/22.6	850/28.3	300/10	320/10.7
Height:	cm/inch	18,5/7.3	17,6/6.9	17,1/6.7	20,7/8.1	26/10.2	20,2/7.9	14/5.5	10,5/4.1





29361 Clear-Aquamarine  
C: 380 ml / 12.7 oz  
H: 18,5 cm / 7.3 inch

29362 Clear-Topaz  
C: 260 ml / 8.7 oz  
H: 17,6 cm / 6.9 inch

29370/II Clear-Aquamarine  
C: 680 ml / 22.6 oz  
H: 26 cm / 10.2 inch

29376 Clear-Alexandrite  
C: 300 ml / 10 oz  
H: 19,6 cm / 7.7 inch

29371/f Clear-Smoke  
C: 180 ml / 6 oz  
H: 20,7 cm / 8.1 inch

*Moser*



29378/I  
C: 300 ml / 10 oz  
H: 14 cm / 5.5 inch

29368  
C: 300 ml / 10 oz  
H: 10,5 cm / 4.1 inch

The Seattle pattern is available in a collection of various pieces to complement your dining table, buffet, bar and dressing table. Included are stemware and barware. DOF and HiBall tumblers are available in Moser translucent colours in addition to clear: Beryl, Eldor, Topaz, Aquamarine, Alexandrite and Rosalin (from left).





*Moser*

Elegant and slim Isabel by Jiří Šuhájek was inspired by his visit to Segovia and the exquisite Glass Museum of La Granja, Spain. The drinking set with a faceted clear or coloured stem was designed for special celebrations and events. The artist's aim is to stress the colour variety and traditional craftsmanship of the Moser glassworks. Designed 2000.



Capacity: ml/oz	1	2	3	11/f	10/l	19	18/l	8
Height: cm/inch	270/9 23,6/9.3	250/8.3 23/9	200/6.7 20,2/7.9	200/6.7 24,4/9.6	850/28.3 32,9/12.9	1400/1 qt. 13.3 oz 35/13.7	350/11.7 17/6.7	350/11.7 13,2/5.2



29381 Clear-Topaz  
C: 270 ml / 9 oz  
H: 23,6 cm / 9.3 inch

29390/I Clear-Alexandrite  
C: 850 ml / 28.3 oz  
H: 32,9 cm / 12.9 inch

29391/f Clear-Smoke  
C: 200 ml / 6.7 oz  
H: 24,4 cm / 9.6 inch

*Moser*

29382 Clear-Beryl  
C: 250 ml / 8.3 oz  
H: 23 cm / 9 inch

29398/I Clear-Aquamarine  
C: 350 ml / 11.7 oz  
H: 17 cm / 6.7 inch

The Isabel pattern is available in a collection of various pieces to complement your dining table, buffet, bar and dressing table. Included are stemware and barware. Available in Moser translucent colours in combination with clear: Clear-Ocean green, Clear-Topaz, Clear-Beryl, Clear-Aquamarine, Clear-Alexandrite and Clear-Smoke (below from left).



29382

29440/1 cut stem



The drinking set was inspired by the life of young generation, their liking for techno music and fashion. It reminds us of the tropical jungle - the world of the unknown beauty and peril. Goblet rims of Tropical blossom are cut into softly curved waves and relate to the principal of natural growth. Also available with delicately cut stem.

Designed by Karolína Kopřivová in 2002.



	1	2	3	11/f	10/II	19	8/0	18/I
Capacity: ml/oz	320/10.7	180/6	150/5	200/6.7	850/28.3	1250/1 qt. 8.3 oz	350/11.7	400/13.3
Height: cm/inch	20,8/8.2	20/7.9	19/7.5	23,6/9.3	25,5/10	24,3/9.5	11,8/4.6	19/7.5





29441/X Rosalin  
C: 380 ml / 12.7 oz  
H: 21,2 cm / 8.3 inch

29441 Rosalin  
C: 320 ml / 10.7 oz  
H: 20,8 cm / 8.2 inch



29450/II Aquamarine  
C: 850 ml / 28.3 oz  
H: 25,5 cm / 10 inch



29458/I Aquamarine  
C: 400 ml / 13.3 oz  
H: 19 cm / 7.5 inch

*Moser*

The Isabel pattern is available in a collection of various pieces to complement your dining table, buffet, bar and dressing table. Included are stemware and barware. Available in basic Moser translucent colours in addition to clear: Alexandrite, Aquamarine, Beryl, Eldor, Rosalin and Topaz.

29464 polished



*Moser*

More of glass joy was added to the playful and rocking barware set Topsy. The sparkling drink reflects through the polished lens on each piece. The foot is shaped into the gentle curve. Easy touch can sway the glasses, even though they are perfectly balanced. The drinking set is available in matt and polished surface executions. Designed by Jiří Rydlo in 2002.



29464	29461	29460/E	29475/I	29472	29470/II	29460/V
C: 370 ml/12.3 oz	C: 500 ml/16.7 oz	H: 13 cm/5.1 inch	H: 7 cm/2.7 inch	H: 4,5 cm/1.8 inch	C: 830 ml/27.6 oz	H: 23 cm/9 cm
H: 10,1 cm/4 inch	H: 13,5 cm/5.3 inch	W: 13 cm/5.1 inch	W: 30 cm/11.8 inch	W: 15,5 cm/6.1 inch	H: 32,7 cm/12.8 inch	



The Topsy pattern is available in a collection of various pieces to complement your dining table, buffet, bar and dressing table. The original collection includes DOF, HiBall, ice bucket, plate, bowl and bud vase, produced in translucent Moser colours in addition to clear: Alexandrite, Topaz, Rosalin, Beryl, Eldor and Aquamarine (from top left).





*Moser*

The spherical triangle represents the fundamental shape principle of this set. Its mighty ice and three cut facets intensify the beauty of glass. Thanks to its ergonomic shape you can lift the heavy goblets in a typical Moser execution with real ease. The number three, which is hidden in the shape and name of the drinking set, has been a significant symbol for many cultures since antiquity. Designed by Kateřina Doušová in 2002.



29495/I	29492	29480/S	29480/V	29499	29488/O	29498/I
H: 12 cm/4.7 inch	H: 7 cm/2.7 inch	H: 10 cm/3.9 inch	H: 26.3 cm/10.3 inch	C: 1500 ml/1.5 qt.	C: 260 ml/8.7 oz	C: 300 ml/10 oz
W: 25 cm/9.8 inch	W: 15 cm/5.9 inch			H: 31.3 cm/12.3 inch	H: 10.2 cm/4 inch	H: 15.7 cm/6.2 inch

29499 Beryl  
C: 1500 ml / 1.5 qt.  
H: 31,3 cm / 12.3 inch



29495/1 Beryl  
H: 12 cm / 4.7 inch  
W: 25 cm / 9.8 inch

29498/1 Beryl  
C: 300 ml / 10 oz  
H: 15,7 cm / 6.2 inch

29488/0 Beryl  
C: 260 ml / 8.7 oz  
H: 10,2 cm / 4 inch

29488/0 Aquamarine  
C: 260 ml / 8.7 oz  
H: 10,2 cm / 4 inch

29492 Aquamarine  
H: 7 cm / 2.7 inch  
W: 15 cm / 5.9 inch

*Moser*

The Trinity pattern is available in a collection which includes DOF, HiBall and other table accessories - salad bowl, bowl and candlestick. The barware is available in basic Moser translucent colours in addition to clear: Alexandrite, Aquamarine, Beryl, Eldor, Rosalin and Topaz.



*Moser*

The drinking set Lancelot expresses the medieval legacy of bravery, loyalty and romanticism. The set is named after Sir Lancelot, the greatest of King Arthur's knights. Among his many adventures are the rescue of the abducted Queen Guinevere from Meleagant and the quest for the Holy Grail. Stems are hand cut into four facets. The drinking set is available in matt and polished executions. Designed by Kateřina Doušová in 2002.



Capacity: ml/oz	1	1	2	3	11/f	10/II	19	8/0	18/1
Height: cm/inch	370/12.3	280/9.3	210/7	150/5	190/6.3	800/26.6	1500/1.5 qt.	350/11.7	400/13.3
	22,7/8.9	21,2/8.3	20/7.9	19/7.5	25,4/10	31,5/12.4	27,5/10.8	10,9/4.3	15,1/5.9





**29521 Clear-Aquamarine**  
 C: 280 ml / 9.3 oz  
 H: 21,2 cm / 8.3 inch

**29522 Clear-Rosalin**  
 C: 210 ml / 7 oz  
 H: 20 cm / 7.9 inch

**29523 Clear-Eldor**  
 C: 150 ml / 5 oz  
 H: 19 cm / 7.5 inch

**29530/II Clear-Topaz**  
 C: 800 ml / 26.6 oz  
 H: 31,5 cm / 12.4 inch

**29538/I Clear-Beryl**  
 C: 400 ml / 13.3 oz  
 H: 15,1 cm / 5.9 inch

**29531/f Clear-Alexandrite**  
 C: 190 ml / 6.3 oz  
 H: 25,4 cm / 10 inch

*Moser*

The Lancelot pattern is available in a collection of various pieces to complement your dining table, buffet, bar and dressing table. Included are stemware and barware in basic Moser translucent colours in addition to clear: Alexandrite, Aquamarine, Beryl, Eldor, Rosalin and Topaz.

29620/PO + OP



29620/PO + OP platinum



*Moser*

Casanova was created by Jan Mareš in 2003 for whom the name has two meanings. One is a play on the name itself - Casa Nova, representing a new design for the home and creating festive table settings. The second meaning refers to the 18<sup>th</sup> century Venetian author, soldier, adventurer and romantic who inspires universal fascination. Casanova's grandeur is emphasized by its tall cone-shaped stem, panel cut with 10 edges and a golden ring at the top.



Capacity: ml/oz	1	1	2	9	11/f	10/l	19	18/l
Height: cm/inch	360/12	300/10	220/7.3	160/5.3	240/8	1000/1 qt.	1500/1.5 qt.	450/15
	24,4/9.6	22,9/9	21,9/8.6	18,5/7.3	25,2/9.9	35,9/14.1	27,2/10.7	19,3/7.6



**29621**  
C: 300 ml / 10 oz  
H: 22,9 cm / 9 inch

**29622**  
C: 220 ml / 7.3 oz  
H: 21,9 cm / 8.6 inch

**29631/f**  
C: 240 ml / 8 oz  
H: 25,2 cm / 9.9 inch

**29630/l**  
C: 1000 ml / 1 qt.  
H: 35,9 cm / 14.1 inch

**29638/l**  
C: 450 ml / 15 oz  
H: 19,3 cm / 7.6 inch

**29636**  
C: 300 ml / 10 oz  
H: 21,9 cm / 8.6 inch

*Moser*

The Casanova pattern is available in a collection of over ten pieces to complement your dining table, buffet, bar and dressing table.





29740 cut stem



*Moser*

The drinking set Sonnet was designed by Ingrid Račková and David Suchopárek in 2004. Pure clear glass, simple smooth conical goblet and significant sparkling cut on the stem evoke the feeling of purity and peace.



	1	1	2	3	11/f	10/1	19	18/1	8/0
Capacity: ml/oz	380/12.7	270/9	220/7.3	160/5.3	140/4.7	1000/1 qt.	1500/1.5 qt.	370/12.3	330/11
Height: cm/inch	26,6/10.4	25,6/10.1	23,6/9.3	21,7/8.5	27/10.6	33/13	31/12.2	15,1/5.9	10,6/4.2



29741  
C: 270 ml / 9 oz  
H: 25,6 cm / 10.1 inch

29759  
C: 1500 ml / 1.5 qt.  
H: 31 cm / 12.2 inch

29748/0  
C: 330 ml / 11 oz  
H: 10,6 cm / 4.2 inch

*Moser*

29742  
C: 220 ml / 7.3 oz  
H: 23,6 cm / 9.3 inch

The Sonnet pattern is available in a collection of various pieces to complement your dining table, buffet, bar and dressing table. Included are stemware and barware.

29760/OP



29760/OP platinum



*Moser*

The name of the set comes from the Latin word Vera, which stands for something true, genuine and real. This is a drinking set designed by Petr Vadura in 2005, too. The goblets with its extremely refined silhouette decorate 16 delicately cut lens. Goblet extends harmoniously into the lower part covered with 16 dense vertical wedge cuts. A new type of gilded or platinum decoration, intended only for this drinking set, can decorate the Vera suite.



	1	1	2	3	9	11/f	10/I	19	18/I	8/0
Capacity: ml/oz	340/11.3	250/8.3	200/6.7	160/5.3	270/9	190/6.3	1000/1 qt.	1500/1.5 qt.	420/14	380/12.7
Height: cm/inch	21,5/8.4	20,3/8	19,2/7.5	18/7.1	17/6.7	23,5/9.2	31/12.2	29,3/11.5	17,2/6.8	10,5/4.1





29761  
C: 250 ml / 8.3 oz  
H: 20,3 cm / 8 inch

29769  
C: 270 ml / 9 oz  
H: 17 cm / 6.7 inch

29779  
C: 1500 ml / 1.5 qt.  
H: 29,3 cm / 11.5 inch

29768/0  
C: 380 ml / 12.7 oz  
H: 10,5 cm / 4.1 inch

*Moser*

The Vera pattern is available in a collection of various pieces to decorate your tastefully laid table. Included are stemware and barware. Vera can be complemented by a wide, distinctively gilded or platinum decoration.